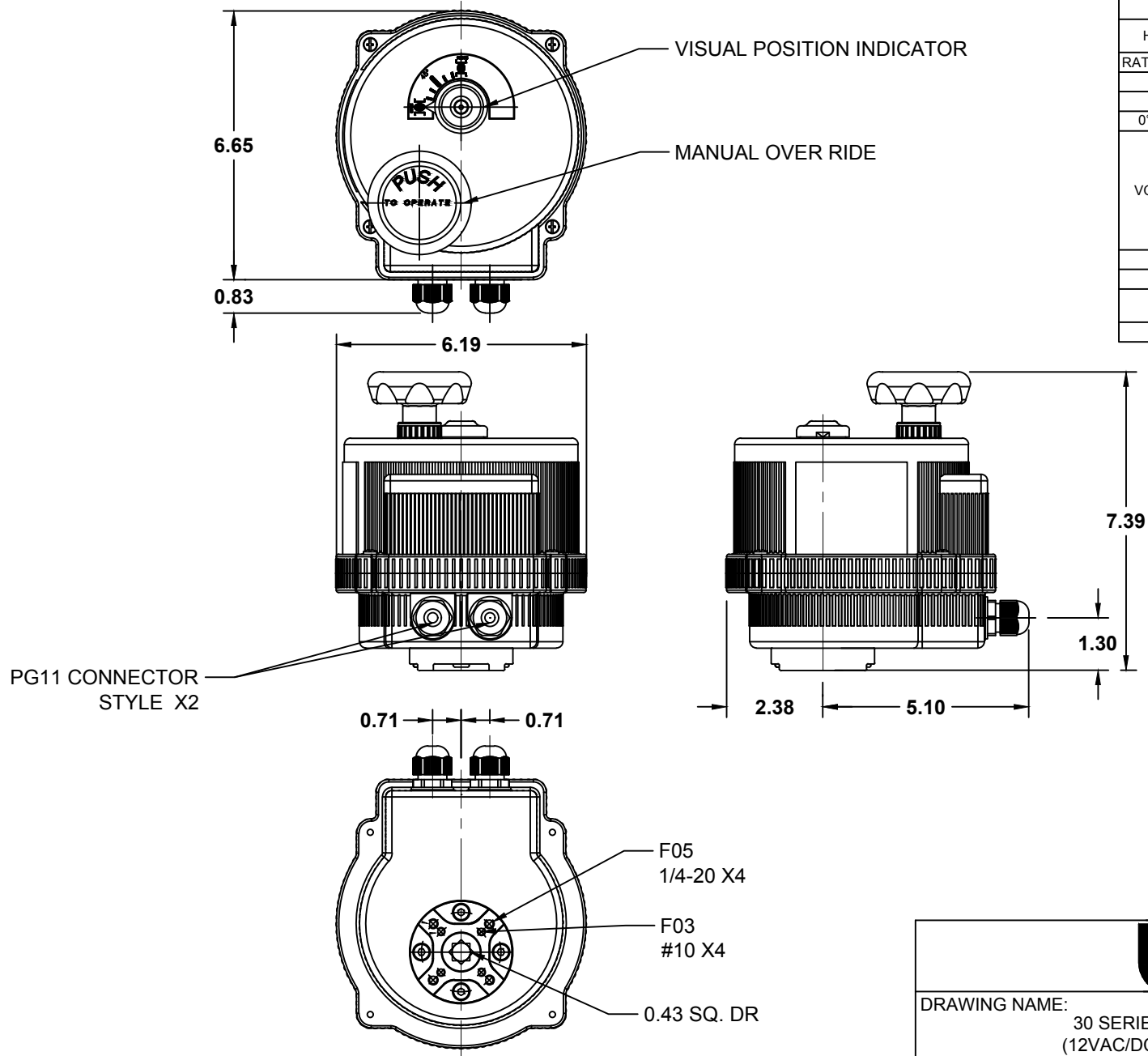



ACTUATOR NOTES	
HOUSING MATERIAL	HIGH IMPACT PLASTIC
RATINGS/CERTIFICATIONS	IP67
OPERATING TEMP	-4°F TO 131°F
TORQUE	266 IN/LBS (30 Nm)
0° TO 90° CYCLE TIME	8 SEC.
VOLTAGES AVAILABLE:	12 VAC/DC 1.2 AMP (50% DUTY CYCLE)
	24VAC/DC 0.6 AMP 75% DUTY CYCLE
	100-240 VAC 0.4-.02 AMP 75% DUTY CYCLE
LIMIT SWITCHES	2 INTERNAL, STANDARD
INTERNAL HEATER	STANDARD FEATURE
BATTERY BACKUP FAILSAFE	OPTIONAL
4-20mA FEEDBACK	OPTIONAL



			
DRAWING NAME: 30 SERIES ELECTRIC ACTUATOR: (12VAC/DC, 24 VAC/DC, 110-240 VAC)			
MATERIAL:	A	DRAWING NUMBER: VB030-0XX	REV. 3
SCALE: N.T.S.	NAME: MCH	DATE: 10-28-20	