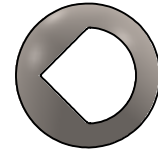
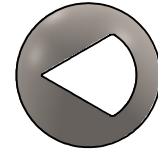


PORT OPTIONS

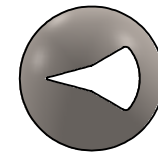
90 DEGREE



60 DEGREE



30-60 DEGREE



PART	A	B	C (NPT)	D	E
S3FV**-4	2.55	1.26	1/2	5.17	F03
S3FV**-6	2.99	1.43	3/4	5.17	F04
S3FV**-8	3.62	1.60	1"	6.87	F04
S3FV**-10	4.19	1.77	1-1/4"	6.87	F04
S3FV**-12	4.56	2.17	1-1/2"	9.86	F05
S3FV**-16	5.35	2.42	2"	9.86	F05
S3FV**-24	7.08	3.38	3"	12.65	F07
S3FV**-32	8.54	4.04	4"	15.01	F10

\* = 90, 60, OR 30-60 (SEE NOTES)

THIS DOCUMENT IS PROPERTY OF UNIVERSAL COMPONENTS, INC. ANY REPRODUCTION, DISCLOSURE, OR USE OF THIS DOCUMENT IS EXPRESSLY PROHIBITED UNLESS OTHERWISE AGREED UPON IN WRITING. \*ALL SPECIFICATIONS SUBJECT TO CHANGE WITHOUT NOTICE.\*

NOTES:

- STAINLESS STEEL 3- PIECE
- 1000 PSI (250 STEAM)
- -4f TO 406f
- 90 DEGREE V-PORT BALL, 30/60, AND 60 DEGREE AVAILABLE
- 25% CARBON PTFE SEATS
- VITON SEAT -ORING & STEM O-RING
- RPTFE STEM SEAL
- NACE MR 017/ISO 15156 AND NACE MR 0103 COMPLIANT
- TO SPECIFY PORT OPTION:  
 S3FV **90V**-\*\* IS 90 DEGREE PORT  
 S3FV **60V**-\*\* IS 60 DEGREE PORT  
 S3FV **30-60V**-\*\* IS 30-60 DEGREE PORT

EXAMPLE:

S3FV60-8 IS A 60 DEGREE V-PORT 1" NPT VALVE

DRAWING NAME: S3FV SERIES THROTTLING BALL VALVES			
MATERIAL: --	<b>A</b>	DRAWING NUMBER: S3FV-SERIES	REV. 2
SCALE: N.T.S.	NAME: MCH	DATE: 8/28/2023	