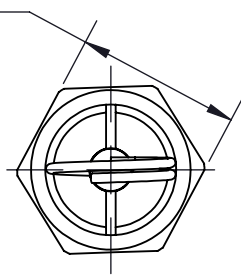
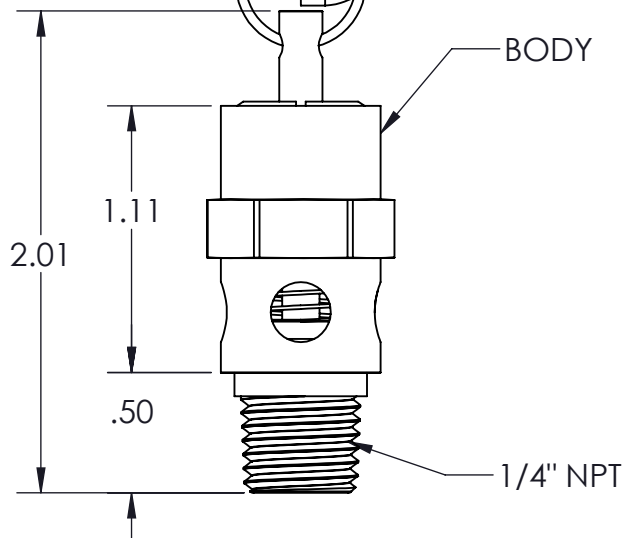


0.69
WRENCH FLATS



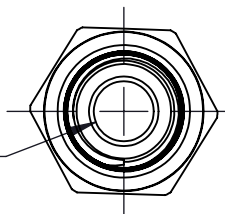
PULL RING
0.54 Ø

BODY



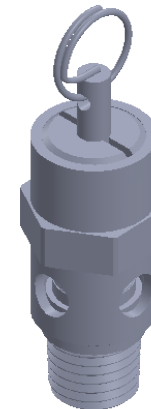
1/4" NPT

0.049 SQ. IN



MATERIALS

BODY	304SS
SPRING	STAINLESS STEEL
SEAL	SILICONE STD, VITON AVAILABLE
RATINGS:	(CRN), National Board/ASME Section XIII
TEMP RANGE	-20°F TO 400°F



NOTES:

TO ORDER A SPECIFIC RANGE, USE SET PRESSURE IN PART NUMBER.

EXAMPLE:

125 PSI SET PRESSURE WILL BE 'SSCVH2-125-ALT'.
TO ORDER THIS SAME VALVE WITH VITON SEAT, ADD 'V' TO PART NUMBER. 'SSCVH2-125V-ALT'

ALL VALVES FACTORY SET.

'POP' SETTING ±3%; ±2 PSIG BELOW SET PRESSURE OF 70 PSIG.

WORKING PRESSURE: 10% LESS THAN SET PRESSURE
OR 5 PSIG FOR SETTINGS BELOW 50 PSIG



DRAWING NAME:

1/4" NPT STAINLESS STEEL ASME RELIEF VALVE
(ALTERNATE OPTION)

MATERIAL:
--

DRAWING NUMBER:
A SSCVH2-ALT-SERIES

REV.
1

SCALE: N.T.S.

NAME: MCH

DATE: 3/8/2023