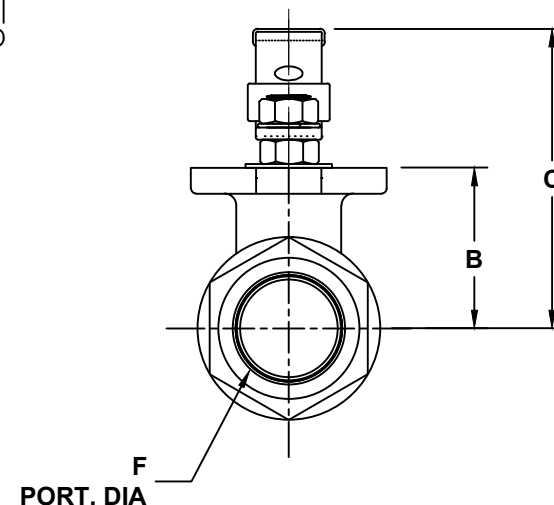
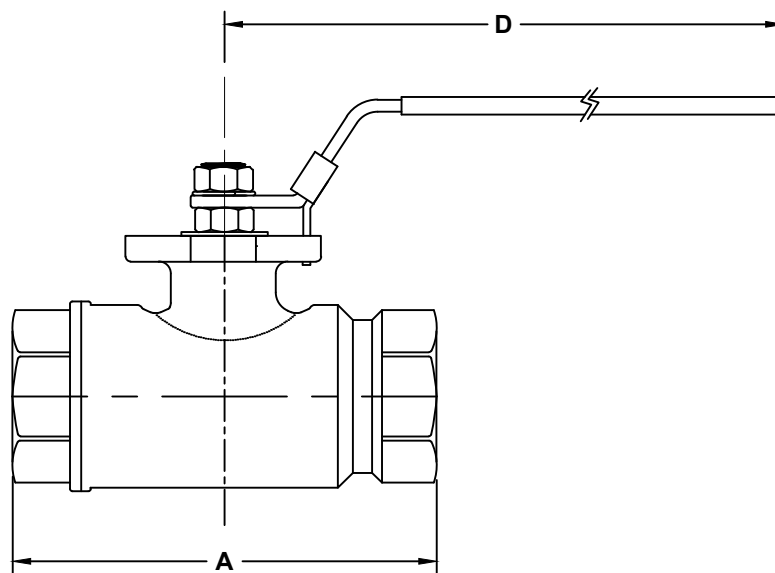


E  
(BOLT CIRCLE/THREAD)

SS6M/CS6M SERIES BALL VALVES								
PART#	THREAD SIZE	A	B	C	D	E	F	Cv
*S6M-4	1/2"	3.19	0.96	2.34	4.26	F03 (M5)	0.49	10
*S6M-6	3/4"	3.79	1.24	2.50	5.16	F04 (M5)	0.79	35
*S6M-8	1"	4.25	1.61	3.00	6.57	F05 (M6)	0.98	68
*S6M-10	1 1/4"	4.72	1.81	3.19	6.57	F05 (M6)	1.26	110
*S6M-12	1 1/2"	5.12	2.40	4.30	8.66	F07(M8)	1.50	155
*S6M-16	2"	5.91	2.40	4.30	8.66	F07 (M8)	1.50	155

CS6M-# = CARBON STEEL  
 SCS6M-# STAINLESS STEEL

NOTE: 2" IS STANDARD PORT DIA



**VALVE NOTES:**

- SEAL WELDED FULL-PORT VALVE
- 6000 PSI W.O.G.
- DELRIN SEATS
- VITON O-RING
- BLOW-OUT PROOF STEM
- ISO PATTERN MOUNTING PAD, TAPPED, FOR ACTUATOR MOUNTING BRACKET
- NACE MR0175-90
- API 607-4 FIRE SAFE/API 608 COMPLIANCE
- API STD 6D

THIS DOCUMENT IS PROPERTY OF UNIVERSAL COMPONENTS, INC.  
 ANY REPRODUCTION, DISCLOSURE, OR USE OF THIS DOCUMENT IS EXPRESSLY PROHIBITED UNLESS OTHERWISE AGREED UPON IN WRITING.  
 \*ALL SPECIFICATIONS SUBJECT TO CHANGE WITHOUT NOTICE.\*



DRAWING NAME:

**STAINLESS/CARBON 2-WAY HIGH PRESSURE VALVES  
 SS6M-CS6M SERIES**

MATERIAL:

**A**

DRAWING NUMBER:

SS6M-CS6M-SERIES-DIMENSIONAL

REV.

**2**

SCALE: N.T.S.

NAME: MCH

DATE: 5-14-19