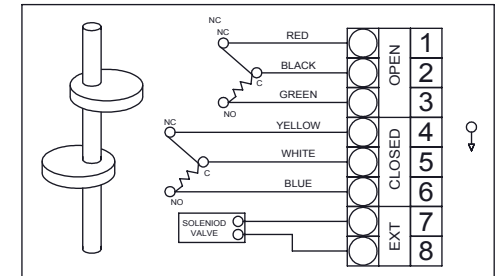


DESCRIPTION	MATERIAL	QTY
BODY	DI-CAST ALUMINUM-POWDER EPOXY COATED	1
POSITION INDICATOR	POLY CARBONATE	1
BOLTS	316 STAINLESS STEEL	4
SHAFT (STEM)	316 STAINLESS STEEL	1
MICRO SWITCH	POLYCARBONATE	2
SEAL	EPDM	1
MOUNTING FEET	STEEL	2

**\*IP:67 ENCLOSURE**

**NOTES:**

- 2 SPDT SWITCHES
- 12 TO 240 VAC OR DC (MAX)
- ADJUSTABLE CAMS
- -20F TO 175F
- ADJUSTABLE MOUNTING FEET



**WIRING DIAGRAM**

THIS DOCUMENT IS PROPERTY OF UNIVERSAL COMPONENTS, INC. ANY REPRODUCTION, DISCLOSURE, OR USE OF THIS DOCUMENT IS EXPRESSLY PROHIBITED UNLESS OTHERWISE AGREED UPON IN WRITING. \*ALL SPECIFICATIONS SUBJECT TO CHANGE WITHOUT NOTICE.\*

DRAWING NAME: UCI S2 LIMIT SWITCH AND VISUAL INDICATOR W/2 SPDT SWITCHES			
MATERIAL: --	<b>A</b>	DRAWING NUMBER: S2 LIMIT SWITCH	REV. 1
SCALE: N.T.S.	NAME: MCH	DATE: 5/3/2019	