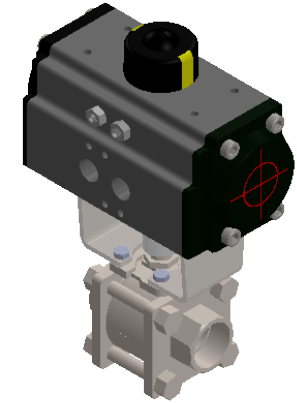
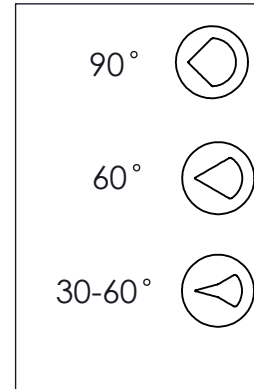


V-PORT OPTIONS



VALVE NOTES:

- STAINLESS STEEL 3- PEICE
- 1000 PSI (250 STEAM)
- -4f TO 406f
- 90 DEGREE V-PORT BALL, 30-60 & 60 DEGREE AVAILABLE
- 25% CARBON PTFE SEATS
- VITON SEAT -ORING & STEM O-RING
- RPTFE STEM SEAL
- NACE MR 017/ISO 15156 AND NACE MR 0103 COMPLIANT

ACTUATOR NOTES:

- EXTRUDED ALUMINUM BODY
- DOUBLE ACTING OR SPRING RETURN
- VISUAL INDICATOR (INCLUDED)
- 90 PSI TO OPERATE
- VITON O-RING SEALS

PART NO:	NPT SIZE	A	B	C	D	BRACKET	ACTUATOR
PD-S**V-4	1/2	2.55	4.57	5.10	2.02	RI3789	DA32
PD-S**V-6	3/4	2.99	7.40	5.88	2.82	RI3781	DA52
PD-S**V-8	1	3.62	7.60	5.88	2.82	RI3030	DA52
PD-S**V-10	1-1/4	4.19	7.75	6.46	3.17	RI3030	DA63
PD-S**V-12	1-1/2	4.56	9.01	6.46	3.17	RI3031	DA63
PD-S**V-16	2	5.35	9.97	8.27	3.78	RI3034	DA75
PD-S**V-24	3	7.08	11.49	9.47	4.17	RI3003	DA85
PD-S**V-32	4	8.54	13.42	10.83	4.84	RI3004	DA100

PART NO:	NPT SIZE	A	B	C	D	BRACKET	ACTUATOR
PC-S**V-4	1/2	2.55	6.40	5.88	2.82	RI3790	SR52
PC-S**V-6	3/4	2.99	7.84	6.46	3.17	RI3783	SR63
PC-S**V-8	1	3.62	8.07	6.46	3.17	RI3033	SR63
PC-S**V-10	1-1/4	4.19	8.23	6.46	3.17	RI3033	SR63
PC-S**V-12	1-1/2	4.56	10.27	9.47	4.17	RI3034	SR85
PC-S**V-16	2	5.35	11.06	10.83	4.84	RI3034	SR100
PC-S**V-24	3	7.08	13.70	14.64	5.83	RI3010	SR125
PC-S**V-32	4	8.54	15.24	14.64	5.83	RI3005	SR125

THIS DOCUMENT IS PROPERTY OF UNIVERSAL COMPONENTS, INC.  
 ANY REPRODUCTION, DISCLOSURE, OR USE OF THIS DOCUMENT IS  
 EXPRESSLY PROHIBITED UNLESS OTHERWISE AGREED UPON IN WRITING.  
 \*ALL SPECIFICATIONS SUBJECT TO CHANGE WITHOUT NOTICE.\*

PORT:  
 S90V = 90 V  
 S60V = 60 V  
 S30-60 = 30/60 V



DRAWING NAME:

PNEUMATIC ACTUATED 2-WAY V-PORT STAINLESS STEEL 2-WAY  
 BALL VALVES, 1000 PSI

MATERIAL: --	<b>A</b>	DRAWING NUMBER: P-ACT-S90V-SERIES	REV. 2
SCALE: N.T.S.	NAME: MCH	DATE: 12-15-2022	