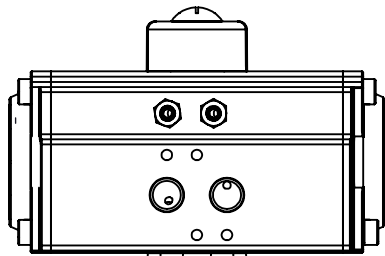
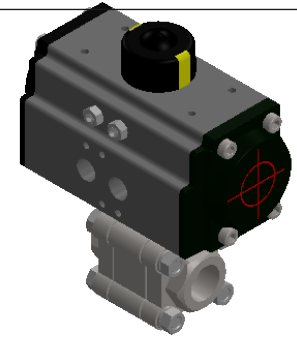
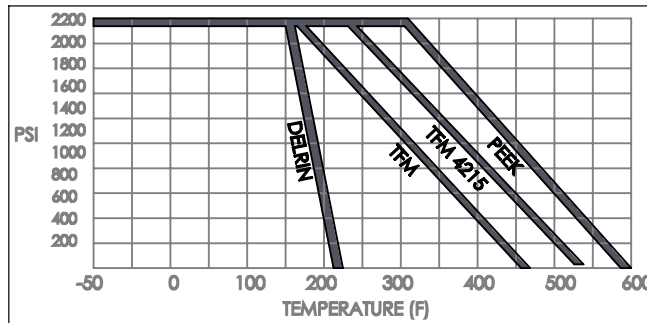
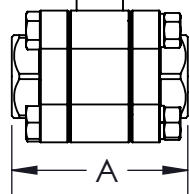
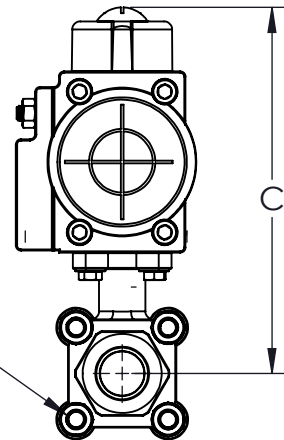


ISO MOUNTING



\*APPEARANCE NOTE:  
1" TO 1.5" IS 4 LUG BODY (SHOWN)  
2" IS 6 LUG BODY  
2.5-3" IS 8 LUG BODY  
4" IS 16 LUG BODY



CONNECTION SIZE/TYPE

**VALVE NOTES:**

- FIRE SAFE API 607 6TH ED
- NACE MR0175
- (CARBON STEEL) 2220 PSI
- (STAINLESS) 2160 PSI
- 1/4" THRU 2"
- 1500 PSI 2-1/2" TO 4"
- OPTIONAL V-BALL
- CLASS 900 1/4"-2"
- CLASS 600 2-1/2"-UP
- SOCKET AND BUTT WELD AVAILABLE
- OPTIONAL SEATS ARE DELRIN, PEEK, AND TFM

**ACTUATOR NOTES:**

- EXTRUDED ALUMINUM BODY
- DOUBLE ACTING OR SPRING RETURN
- VISUAL INDICATOR (INCLUDED)
- 80 PSI TO OPERATE
- VITON O-RING SEALS

**DOUBLE ACTING: DIMENSIONAL DATA**

PART NUMBER	SIZE-NPT	A	B	C	Cv	ACTUATOR
PD-*3F22-2	1/4	2.61	5.79	5.02	8.5	DA52
PD-*3F22-3	3/8	2.61	5.79	5.02	8.5	DA52
PD-*3F22-4	1/2	2.75	5.79	5.10	21	DA52
PD-*3F22-6	3/4	3.62	5.79	5.76	50	DA52
PD-*3F22-8	1	4.13	6.46	5.98	90	DA63
PD-*3F22-10	1-1/4	4.37	6.46	6.10	110	DA63
PD-*3F22-12	1-1/2	4.88	8.27	7.12	240	DA75
PD-*3F22-16	2	5.90	9.47	8.44	400	DA85
PD-*3F22-20	2-1/2	6.49	13.11	10.52	700	DA115
PD-*3F22-24	3	7.68	14.65	11.55	980	DA125
PD-*3F22-32	4	9.64	19.69	14.37	1700	DA160

**SPRING RETURN: DIMENSIONAL DATA**

PART NUMBER	SIZE-NPT	A	B	C	Cv	ACTUATOR
P*-*3F22-3	3/8	2.61	6.46	5.47	8.5	SR63
P*-*3F22-2	1/4	2.61	6.46	5.47	8.5	SR63
P*-*3F22-4	1/2	2.75	6.46	5.10	21	SR63
P*-*3F22-6	3/4	3.62	8.27	6.45	50	SR75
P*-*3F22-8	1	4.13	8.27	6.69	90	SR75
P*-*3F22-10	1-1/4	4.37	9.47	7.36	110	SR85
P*-*3F22-12	1-1/2	4.88	13.11	9.14	240	SR115
P*-*3F22-16	2	5.90	14.65	10.41	400	SR125
P*-*3F22-20	2-1/2	6.49	19.41	14.09	700	SR180
P*-*3F22-24	3	7.68	C/F	C/F	980	C/F
P*-*3F22-32	4	9.64	C/F	C/F	1700	C/F

OPTION NOTES:

- \*-3FF:
- S3FF = STAINLESS STEEL
- C3FF = CARBON STEEL
- P\*:
- PC = DEFAULT CLOSED
- PO = DEFAULT OPEN

THIS DOCUMENT IS PROPERTY OF UNIVERSAL COMPONENTS, INC. ANY REPRODUCTION, DISCLOSURE, OR USE OF THIS DOCUMENT IS EXPRESSLY PROHIBITED UNLESS OTHERWISE AGREED UPON IN WRITING. \*ALL SPECIFICATIONS SUBJECT TO CHANGE WITHOUT NOTICE.\*



DRAWING NAME:

PNEUMATIC ACTUATED 3F22 SERIES FIRE SAFE 2-WAY FULL PORT BALL VALVES

MATERIAL: --	<b>A</b>	DRAWING NUMBER: P-ACT-S3F22-SERIES	REV. 1
SCALE: N.T.S.	NAME: MCH	DATE: 5/16/2023	