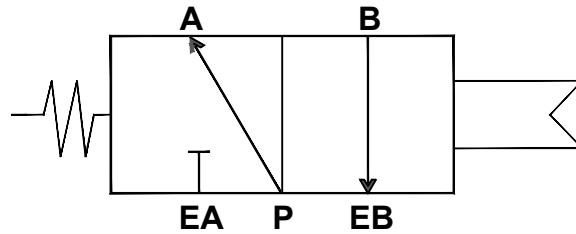


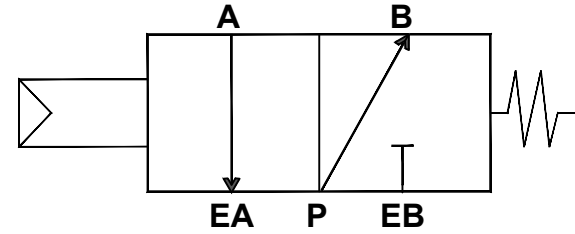
NOTES:

- ALL UCI SOLENOID VALVES ARE BLACK ANODIZED, STANDARD. CONTACT FACTORY FOR OTHER OPTIONS.
- EXPLOSION PROOF UNITS PRE WIRED STANDARD
- DIN CONNECTION NOT APPLICABLE FOR PRE WIRED OPTION

STANDARD CONFIGURATION



OPTIONAL CONFIGURATION



MOUNTING:

N = Namur Mount

MODEL:

3 = Three-Way

4 = Four-Way

SOLENOID POSITION:

S = Single

D = Double

WIRING OPTION:

(BLANK) = STANDARD

-W = PRE-WIRED (CONDUIT ONLY)

VOLTAGE:

1 = 110 VAC

2 = 24 VDC

12 = 12 VDC

22 = 220 VAC

24 = 24 VAC

ELECTRICAL TERMINATION:

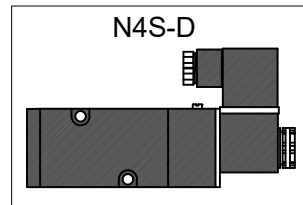
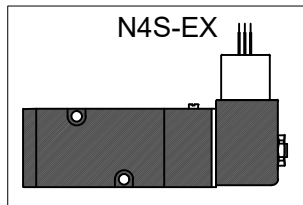
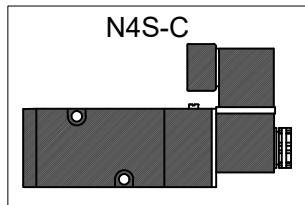
C = 1/2" Conduit

D = Din Connector

EX = Explosion Proof

CS = Cord Set with two-meter wire lead

EXAMPLES



DRAWING NAME:

NAMUR VALVE MATRIX

MATERIAL:

A

DRAWING NUMBER:

NAMUR VALVE MATRIX

REV.

4

SCALE: N.T.S.

NAME: MCH

DATE: 5-24-22