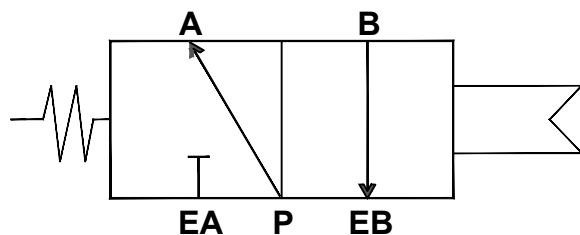


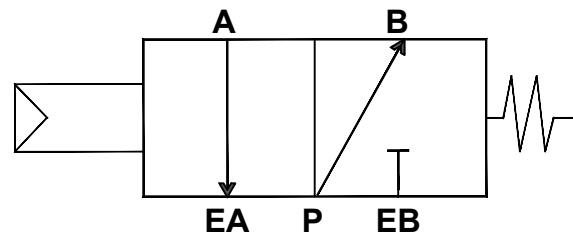
NOTES:

- ALL UCI SOLENOID VALVES WILL BE SOLD AS 'B' (BLACK ANODIZED) UNITS UNLESS OTHERWISE SPECIFIED

STANDARD CONFIGURATION



OPTIONAL CONFIGURATION



N 4 S - C 1

BODY:

(BLANK) = Black Anodized
 C = Clear Anodized
 N = Nickel Infused
 S = 304 Stainless Body

MOUNTING:

N = Namur Mount

MODEL:

3 = Three-Way
 4 = Four-Way

SOLENOID POSITION:

S = Single
 D = Double

CONFIGURATION:

(BLANK) = STANDARD (coil as shown)
 R= OPTIONAL (reverse coil)

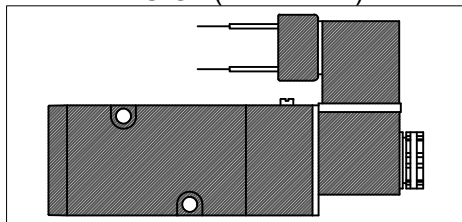
VOLTAGE:

1 = 110 VAC
 2 = 24 VDC
 12 = 12 VDC
 22 = 220 VAC
 24 = 24 VAC

ELECTRICAL TERMINATION:

C = 1/2" Conduit
 D = Din Connector
 EX = Explosion Proof
 CS = Cord Set with two-meter wire lead
 P = Air Piloted

N4S-C1 (EXAMPLE)



DRAWING NAME:

NAMUR VALVE MATRIX

MATERIAL:	A	DRAWING NUMBER: NAMUR VALVE MATRIX	REV. 2
SCALE: N.T.S.	NAME: MJB/MCH	DATE:	10-5-21