

SPM2001 & 2002 SERIES 2" PANEL MOUNT DRY GAUGES

ALL SPECIFICATIONS AND DIMENSIONS SUBJECT TO CHANGE WITHOUT NOTICE



SPM2001 & 2002 SERIES

- **Case:** Black Painted Steel, Chrome Ring
- **Dial:** Aluminum, White, Black, & Blue Type
- **Scale:** Dual (lb/in² - bar - x 100 kpa)
- **Bourdon Tube:** Brass
- **Connection:** SAD2001- Brass 1/8" NPT
SAD2002- Brass 1/4" NPT
- **Lens:** Acrylic
- **Surge Protection:** Standard
- **Accuracy:** ANSI Grade B, 3%-2%-3%

PART#	RANGE
SPM200*-V	30hg-0
SPM200*-C	30hg-0-30 PSI
SPM200*-15	0-15 PSI
SPM200*-30	0-30 PSI
SPM200*-60	0-60 PSI
SPM200*-100	0-100 PSI
SPM200*-160	0-160 PSI
SPM200*-200	0-200 PSI
SPM200*-300	0-300 PSI



* Denotes Connection 1=1/8"NPT, 2=1/4"NPT

SAD2001 & 2002 SERIES 2" CENTER BACK CONNECT DRY GAUGES

SAD2001 & 2002 SERIES

- **Case:** Black Painted Steel, Chrome Ring
- **Dial:** Aluminum, White, Black, & Blue Type
- **Scale:** Dual (lb/in² - bar - x 100 kpa)
- **Bourdon Tube:** Brass
- **Connection:** SAD2001- Brass 1/8" NPT
SAD2002- Brass 1/4" NPT
- **Lens:** Acrylic
- **Surge Protection:** Standard
- **Accuracy:** ANSI Grade B, 3%-2%-3%

PART#	RANGE
SAD200*-V	30hg-0
SAD200*-C	30hg-0-30PSI
SAD200*-15	0-15 PSI
SAD200*-30	0-30 PSI
SAD200*-60	0-60 PSI
SAD200*-100	0-100 PSI
SAD200*-160	0-160 PSI
SAD200*-200	0-200 PSI
SAD200*-300	0-300 PSI



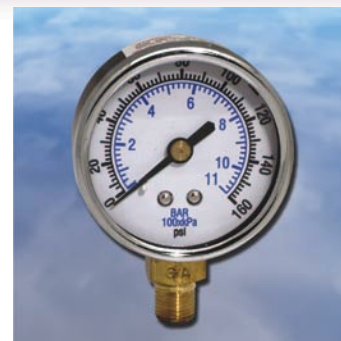
* Denotes Connection 1=1/8"NPT, 2=1/4"NPT

SAD2011 & 2012 SERIES 2" LOWER CONNECT DRY GAUGES

SAD2011 & 2012 SERIES

- **Case:** Black Painted Steel, Chrome Ring
- **Dial:** Aluminum, White, Black, & Blue Type
- **Scale:** Dual (lb/in² - bar - x 100 kpa)
- **Bourdon Tube:** Brass
- **Connection:** SAD2011- Brass 1/8" NPT
SAD2012- Brass 1/4" NPT
- **Lens:** Acrylic
- **Surge Protection:** Standard
- **Accuracy:** ANSI Grade B, 3%-2%-3%

PART#	RANGE
SAD201*-V	30hg-0
SAD201*-C	30hg-0-30 PSI
SAD201*-15	0-15 PSI
SAD201*-30	0-30 PSI
SAD201*-60	0-60 PSI
SAD201*-100	0-100 PSI
SAD201*-160	0-160 PSI
SAD201*-200	0-200 PSI
SAD201*-300	0-300 PSI



* Denotes Connection 1=1/8"NPT, 2=1/4"NPT

SPM2502 SERIES 2.5" PANEL MOUNT DRY GAUGES

SPM2502 SERIES

- **Case:** Black Painted Steel, Chrome Ring
- **Dial:** Aluminum, White, Black, & Blue Type
- **Scale:** Dual (lb/in² - bar - x 100 kpa)
- **Bourdon Tube:** Brass
- **Connection:** Brass 1/4" NPT
- **Lens:** Acrylic
- **Surge Protection:** Standard
- **Accuracy:** ANSI Grade B, 3%-2%-3%

PART#	RANGE
SPM2502-V	30hg-0
SPM2502-C	30hg-0-30 PSI
SPM2502-15	0-15 PSI
SPM2502-30	0-30 PSI
SPM2502-60	0-60 PSI
SPM2502-100	0-100 PSI
SPM2502-160	0-160 PSI
SPM2502-200	0-200 PSI
SPM2502-300	0-300 PSI
SPM2502-400	0-400 PSI
SPM2502-600	0-600 PSI

