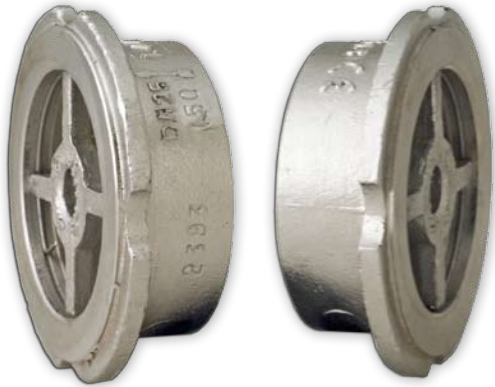
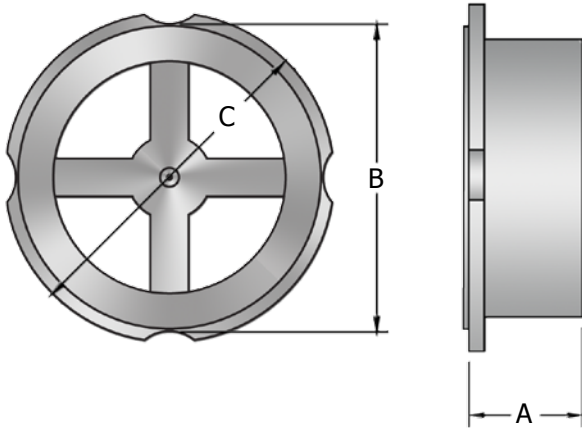


SCFW SERIES CHECK VALVE



Features:

- All 316 Stainless Steel Construction, Other Alloys Available. Consult Factory
- Wafer Style Check fits ANSI class 125FF, 250RF, 150RF and 300RF
- Metal to Metal Seats are Precision Lapped, Resilient Seats Available. Consult Factory
- 1/4 psi Cracking Pressure, Designed to Work in any Position
- Disc Guided by 4 Ribs for Smooth Operation Without Binding
- Standard Working Temperature -40° to 450°F, Wider Temp. Range Available. Consult Factory



Dimensions

PART #	NPT	A	B	C	Lbs	Cv
SCFW-4	1/2"	0.67	1.69	1.97	0.39	8
SCFW-6	3/4"	0.79	2.09	2.36	0.44	10
SCFW-8	1"	0.91	2.48	2.76	0.55	25
SCFW-10	1-1/4"	1.10	2.99	3.19	1.10	33
SCFW-12	1-1/2"	1.10	3.35	3.58	1.54	40
SCFW-16	2"	1.55	3.74	4.17	2.86	60
SCFW-20	2-1/2"	1.81	4.53	4.96	3.75	70
SCFW-24	3"	1.97	5.20	5.55	6.17	150

Bill of Materials

Description	Material
Body	Stainless Steel A351 GR.CF8M type 316
Yoke	Stainless Steel A351 GR.CF8M type 316
Spring	Series 300 Stainless Steel
Disc	Stainless Steel A351 GR.CF8M
Seat	Stainless Steel A351 GR.CF8M
CirClip	Series 300 Stainless Steel

